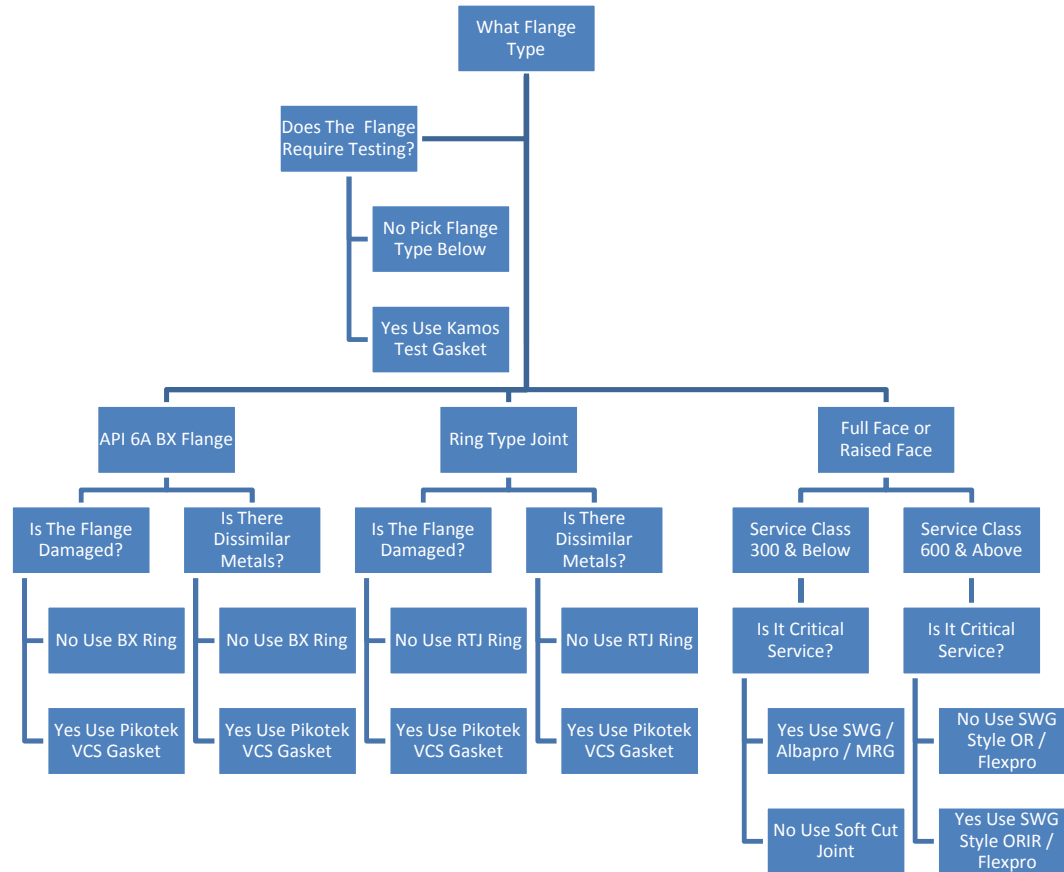




Gasket Selection - Flow Diagram





Gasket Section Guidelines

There are three main categories for Static Sealing Materials - Metallic / Semi-Metallic & Non Metallic products.

Great care must be taken to ensure that the correct Gasket Type and Gasket Materials are chosen to address the following which will ultimately ensure that the Flange Assembly has the best possible chance of obtaining and maintaining a seal:-

- * **Temperature of the Media to be Sealed.**
- * **Pressure of the Media to be Sealed.**
- * **Corrosive Nature of the Media.**
- * **The Criticality of the Flange Assembly.**

Soft Cut Joints should only be used in Low to Medium Pressure Services. These materials are used for General Service, but with careful selection the correct material can be used for Extreme Chemical and Temperature Applications.

The Material Types that fall within this range are CNAF Grade X & Y / Biaxially Orientated Reinforced PTFE / Graphite Laminates / High Temperature Materials / Flange Insulating Sets.

Semi-Metallic Gaskets have a combination of Metallic & Non-Metallic materials. The Non-Metallic compounds provides the Soft Sealing Materials and the Metallic materials give the Gasket it's Strength & Resilience.

These products when the right material combinations are used can seal a wide range of media's at extreme temperatures and high pressures.

The Semi-Metallic Types that fall within this range are Spiral Wound Gaskets / Albapro Kammprofile Gaskets / Metal Jacketed Gaskets / Metal Reinforced Gaskets (MRG's).

Metallic Gaskets can be manufactured in various Sizes & Shapes and are usually for High Pressure and Temperature Applications.

These products seal by putting high loads on the Joints which Plastically Deforms into the Flange Groove. Like all Gaskets these products must only be Used Once, then thrown away.

The Metallic Products that fall within this range are Ring Type Joints Octagonal or Oval Section / BX API Rings / RX API Rings / SBX, SRX & SR Rings for Subsea Installation / Solid Metal Gaskets made to Customer Specific Drawings / Lens Rings / Weld Rings.