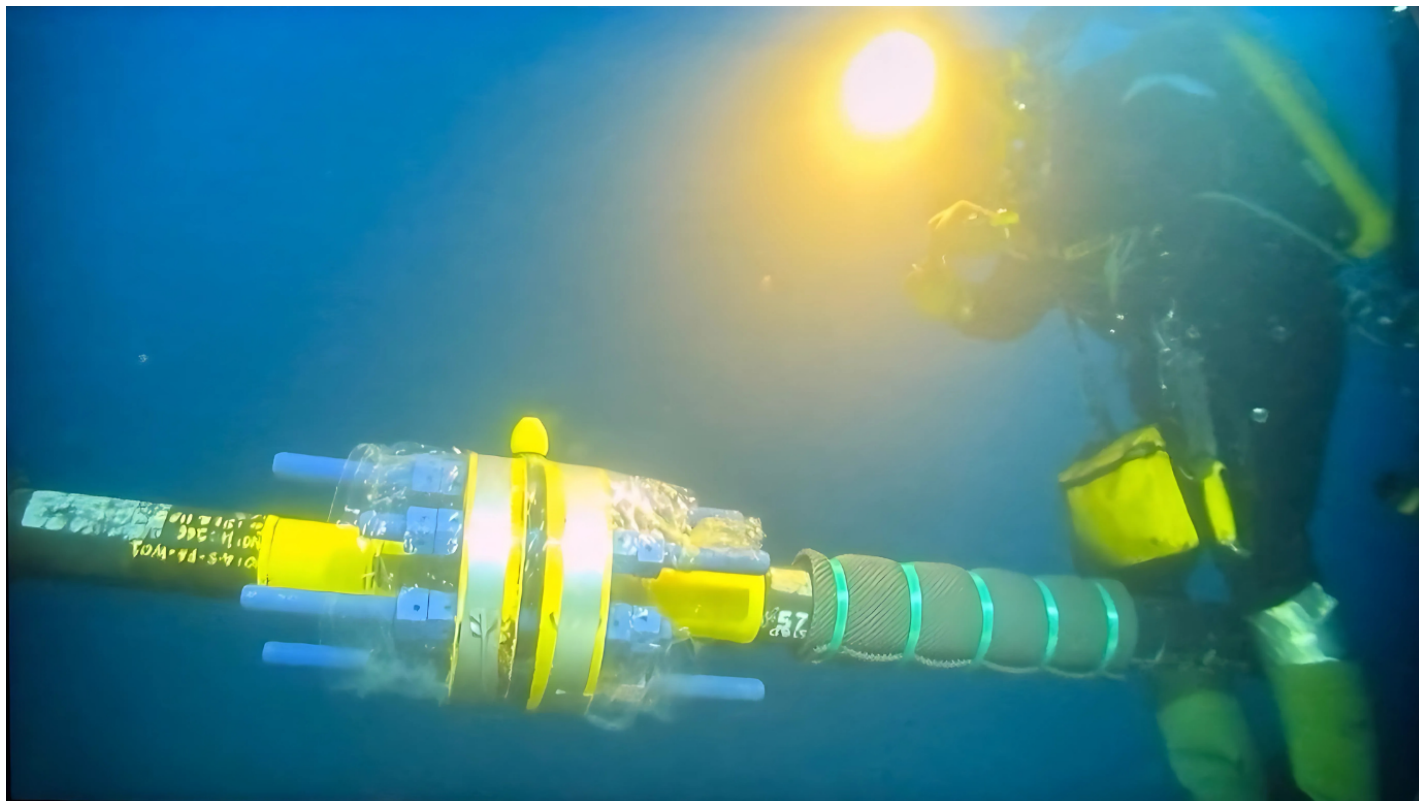
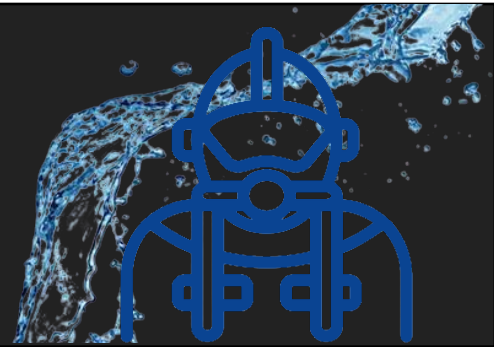


Alba-RIG™

RAPID INTEGRITY GASKETS

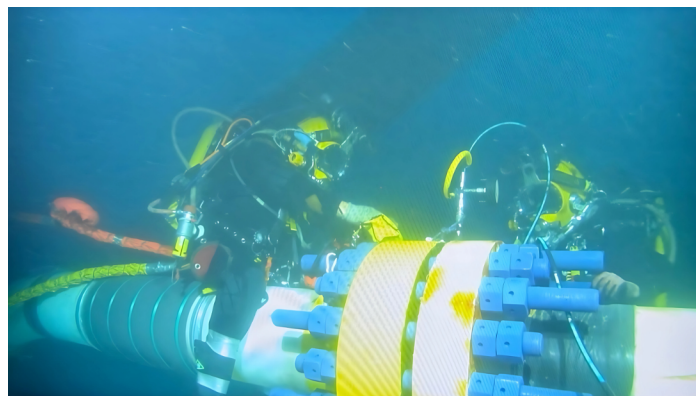
SUBSEA-RIG



The Alba-RIG™ Subsea product line has been designed to withstand the harsh environments of the subsea sector and to provide divers and dive contractors a safe, robust and fast method to leak test flanges underwater.

Manufactured to the same strict parameters as the RTJ version our Subsea design incorporates a number of diver friendly features. The Alba-RIG™ Subsea is the only product on the market designed specifically for subsea leak testing and has been successfully installed on numerous global projects. Alba Gaskets is the only company to provide a dedicated handle for subsea installation, developed through extensive client collaboration and field feedback.

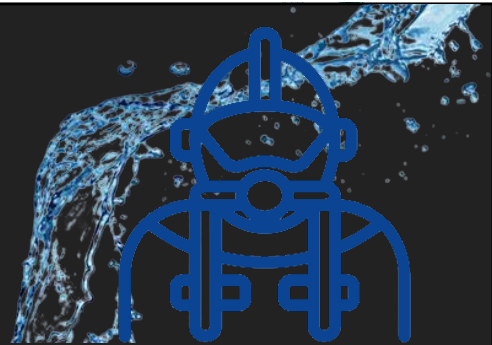
This unique 3D handle enhances installation accuracy, operator safety, and handling efficiency in demanding subsea environments. The innovation represents a major technical advancement and key differentiator within the subsea sealing market.



Alba-RIG™

RAPID INTEGRITY GASKETS

SUBSEA-RIG



SPECIFICATION

Size range: ½" to 60"

Materials: Carbon Steel, Soft Iron, 316, 31803, 32750, 625, 825

Pressure ranges: ASME B16.20 to 2500lbs, API6A 2K to 15K

ALBA-RIG™ SUBSEA HARDNESS TABLE

Material	Designation	Maximum Hardness Brinell
Soft Iron	D	90
316 Stainless Steel	S	135
Inconel 625	INC 625	180-200
Alloy 825	INC 825	150-160
UNS 31803	31803	230
UNS 32750	32750	250



ALBA-RIG™ – SUBSEA

1. Highly visible yellow anti snag protective test port cap
2. Lloyds and DNV Type approved reinforced 1/4" test port located outside flange, ensuring easy access for diver
3. 3D printed bolt bumpers
4. Robust test port fused with laser welding technology
5. Built in alignment ring to centralise the gasket and protect the test port acting as a compression limiter during installation, ensuring that the test port can't be damaged during installation
6. R, RX and BX versions according to ASME B16.5/API 6A/17D metallic RTJs available in: Soft Iron, 316, duplex, super duplex, Alloy 825, INC 625
7. 3D printed diver lift handles for transportation from vessel to subsea flange

