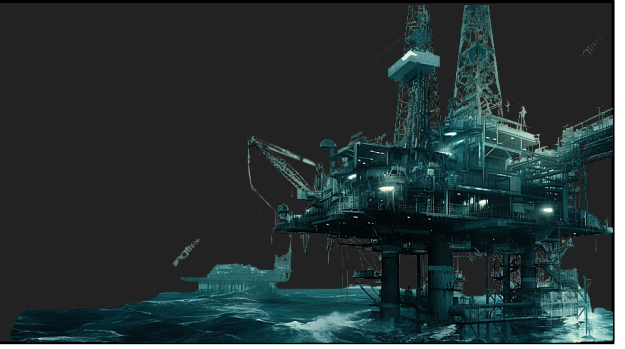


# Alba-RIG™

## RAPID INTEGRITY GASKETS

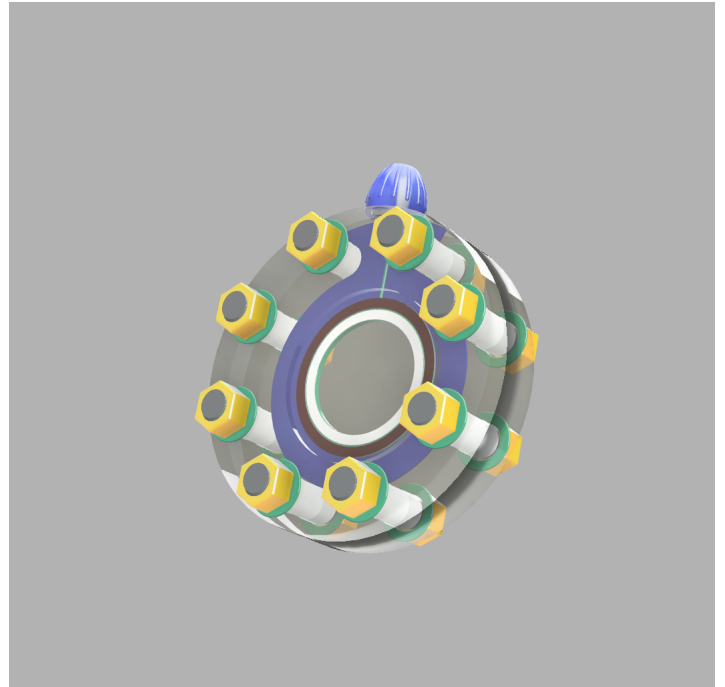
### ISO-RIG™ FLANGE ISOLATION KIT 17K



The Alba ISO-RIG™ provides corrosion control and flange isolation with the added benefit of validating proper gasket installation on flanged connections through hydraulic or gas testing. Designed for use in Raised face, Flat Face and RTJ flanges the ISO-RIG™ can be used in all pressure classes including ANSI 150-2500lbs and ASME/API 6A, 2K-10K.

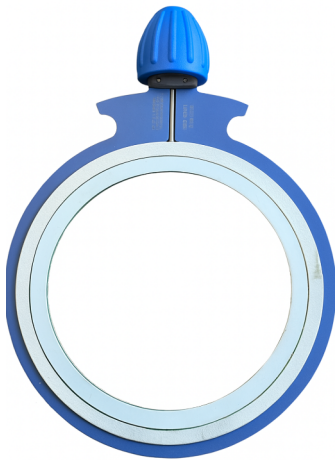
#### Product Overview and Specification

A dielectrically coated SS316L dual kammprofile gasket is manufactured to the highest standard. By placing the inner seal close to the bore, flange face corrosion is significantly mitigated. The coated gasket retainer is impervious to the media within the pipe and increases the flange gap enhancing the isolation characteristics of the product. A fully annealed high quality tube is prepared and laser welded to the gasket. In process inspection is conducted and a standard 1/8" dual Ferrule fitting is fitted to allow integrity testing of the flange assembly. A 3D printed protective cap is supplied to protect the test port post installation.



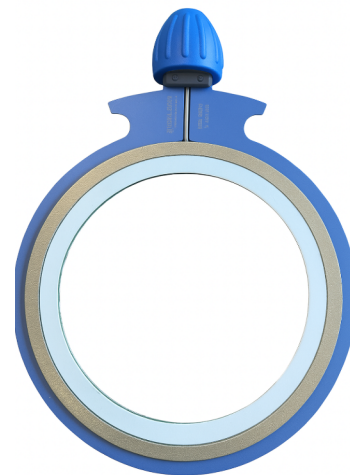
#### Dual Kammprofile ISO-RIG™ Standard

Supplied with Tandem EPTFE seals and Isolation sleeves and washers this version is suitable for standard flange isolation on non critical applications where fire safety is not required.



#### Dual Kammprofile ISO-RIG™ Fire Safe

Supplied with EPTFE inner Seal and Mica Fire safe outer seal and isolation sleeves and washers this version is suitable for flange isolation on applications where fire safety is required.



THE ISO-RIG™ HAS BEEN INDEPENDENTLY FIRE TESTED AND VERIFIED,  
WITH REPORTS AVAILABLE



Block 1, Units 9-12, Southerhead Industrial Estate, Altens, Aberdeen,  
United Kingdom AB12 3LF

T:01224 249414 E: sales@albagaskets.co.uk

[www.albagaskets.com](http://www.albagaskets.com)

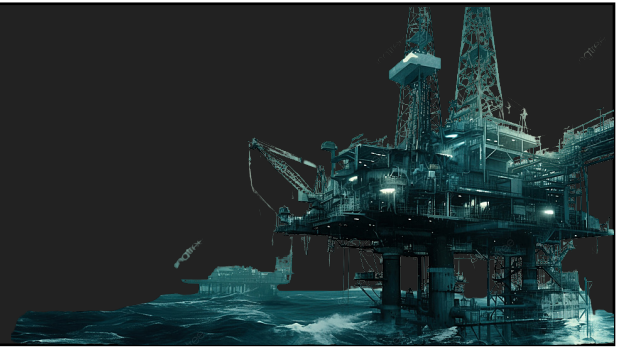


OHS621780 FS 544395 EMS621779

# Alba-RIG™

RAPID INTEGRITY GASKETS

ISO-RIG™ FLANGE ISOLATION KIT 17K



## TECHNICAL DATA OF THE ISO-RIG™

**Gasket thickness:** Uncompressed 6.6mm Compressed 6 mm

**Pressure Ranges:** ANSI Class 150 to 2500lb API 2K to 10K

**Temperature:** -196°C to 260°C

**Fire safe Nomex Bolt sleeving:** Cut to standard or specified size

**Alba A-HC Washers:** Hardened Coated Steel Washers with multi-layer dielectric coating

**Hardness of Washers:** HRC-40-45

**Breakdown voltage:** 2.97KV, ASTM D149-1997

**Dielectric properties:** 200GΩ @ 1000 VDC

## AVAILABILITY OF THE ISO-RIG™

**Flange Types:** RF, FF, RTJ

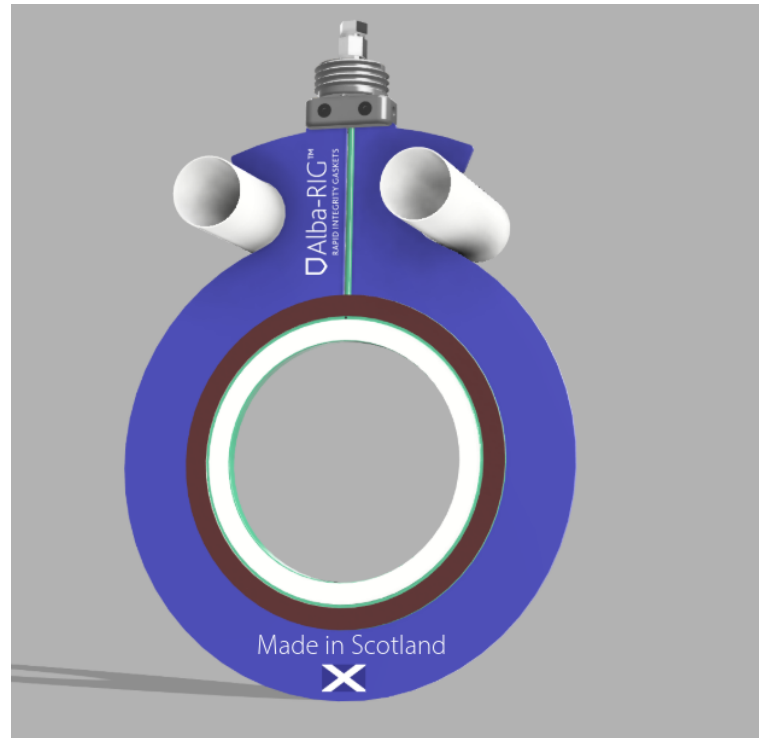
**All sizes:** ½" to 60"

**Standard seal configuration:** EPTFE/EPTFE

**Fire Safe Seal configuration:** EPTFE/MICA

## APPLICATIONS OF THE ISO-RIG™

- Dissimilar metal Bolt to flange connections
- Flange protection against external corrosion
- Mitigates Galvanic corrosion in dissimilar metal flanges
- Electrical Isolation across the flange pressure classes
- Fire Safe Isolation applications
- Provides leak testing capabilities on flanges designed to Isolate
- Protects flange faces from media induced corrosion
- Mismatched flange. RTJ/RF



## Isolation sleeves and washers are supplied with all ISO-RIG's™

As the company's products are used in multiple applications and as the company has no control over the methods of their use, the company excludes all conditions or warranties, expressed or implied by statute or otherwise. Any technical cooperation is given for customers assistance only and without liability on the part of the company.