



The IsoShield HP Flange insulating system is designed for high pressure and very critical services. IsoShield HP gaskets utilise spring energized pressure activated seal technology ensuring the highest levels of sealing. The IsoShield HP consists of NEMA Grade Glass Reinforced Epoxy (GRE) laminate which is permanently bonded to a high-strength SS metal core, and pressure activated spring-energized Teflon seal/(PTFE) is seated in a specially designed groove. The IsoShield HP is designed for up to and including ANSI 2500# and API 10,000# classes.

Application and Benefits

- Sealing solution for high-pressure (ANSI class 150 – 2500lbs service).
- Design to seal mismatched flanges (RF VS RTJ).
- High performing field sealing performance and excellent electrical isolation for cathodic protection systems.
- Designed to prevent flange face corrosion and flow-induced erosion.
- Isolating available in different options of GRE (G-10, G11 etc), steel core and seal material.
- Kits available in different sleeves options.
- Available in type F style or full-face (type E) style.
- GRE retainer material with steel core provides robust and excellent isolation properties for strength and cathodic protection systems for the challenging environment.
- Self-aligning and self-centring gasket easy to install.

IsoShield HP Flange insulating gasket system comprises of:

Insulating Gasket

Alba- IsoShield HP type Insulating Gaskets of GRE (available in different grades) permanently bounded to Steel core with Pressure Activated Spring Energized Teflon(PTFE) seal.

Insulating Sleeves

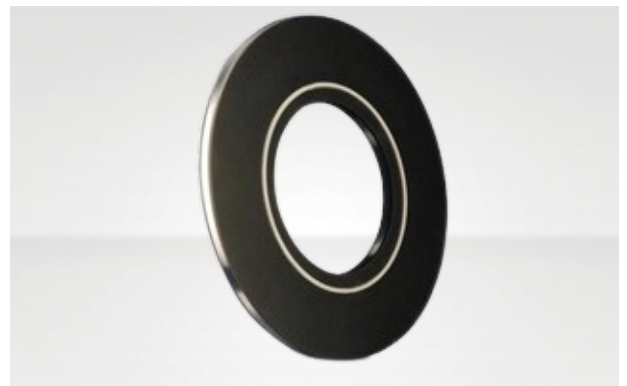
GRE Sleeves, One Full length sleeves per bolt.

Insulating Washers

GRE Insulating Washers- Two washers per bolt

Steel Washers

Zink Plated Steel(ZPS) washers- Two Washers per bolt.





SPECIFICATIONS

IsoShield HP Gaskets are available in different options: GRE-G10 and G11, G-7. Both in Type F and Type E gaskets.

G-10 Glass-Reinforced Epoxy (GRE) laminate.

- Gasket Thickness: 7 mm
- Compressive Strength: 65,000 PSI
- Dielectric Strength: 550 VPM Max.
- Continuous Operating Temp: 302° F / 150° C
- Water Absorption: 0.10
- Tensile Strength: 50,000 PSI

G-11 NEMA grade G-11 Glass-Reinforced Epoxy (GRE) High Temp. laminate material

- Compressive Strength: 50,000 PSI
- Dielectric Strength: 550 VPM Max
- Continuous Operating Temp: 392° F / 200° C
- Water Absorption: 0.10
- Flexural Strength: LW 57,000 PSI
- Tensile Strength: LW 41,000 PSI



INSULATING ISOLATION KITS

To electrically isolate the two flanges, isolating sleeves and washers are required.

SEALING ELEMENTS

Description	Standard	Option
Seals	Spring Energized Teflon	Viton, Nitrile

Description	Standard	Option
Sleeves	G-10	Mylar, G-11, Nomex
Insulating Washers	G-10	G-11, HS(Metallic Insulating Washers)
Steel Washer	ZPS	ZPS